

# Case Study

**Project Title:**  
Summersfield South, Papworth Everard,  
Cambridgeshire

**Client:**  
David Wilson Homes, South Midlands

**Contract Value:**  
Undisclosed

**Contract Date:**  
August 2008



## Summary:

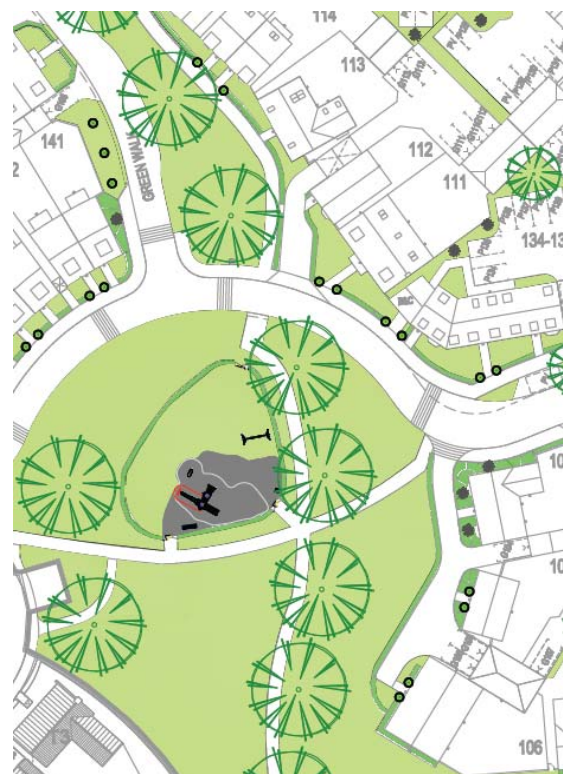
As part of our ongoing relationship with David Wilson Homes (DWH), **tcl** were recently commissioned to develop detailed landscape proposals and supporting documentation for their Summersfield South site in Papworth Everard, Cambridgeshire.

Originally a Kingsoak site, the land has planning permission for 365 new dwellings, now to be partly developed by DWH and partly by Barratt Homes. DWH wish to substitute their housing product in the southern area of the site and consequently needed a re-design of the associated landscaping so that it worked in unity with the whole complex.

Covey Design took the principle of the soft landscape requirements that were set out in the Outline Planning, Residential Design Brief and approved Kingsoak scheme and reviewed, analysed and developed the proposals into the current context.

The re-design process included:

- The review of the character of the landscape bearing in mind that a bypass had been constructed since the first planning approval. Therefore the site needed to be re-assessed from all angles to ensure the strategic landscape proposals took this into account
- The analysis of the structural trees and hedging allocated to each character area
- The evaluation of the species, size and density of planting to ensure the 'sense of place' required in the brief was being achieved whilst providing the instant impact expected by DWH
- The addition of some native and flowering species and further planting which offered valuable wildlife habitat as per the Residential Design Brief, along with provision for all year colour and interest

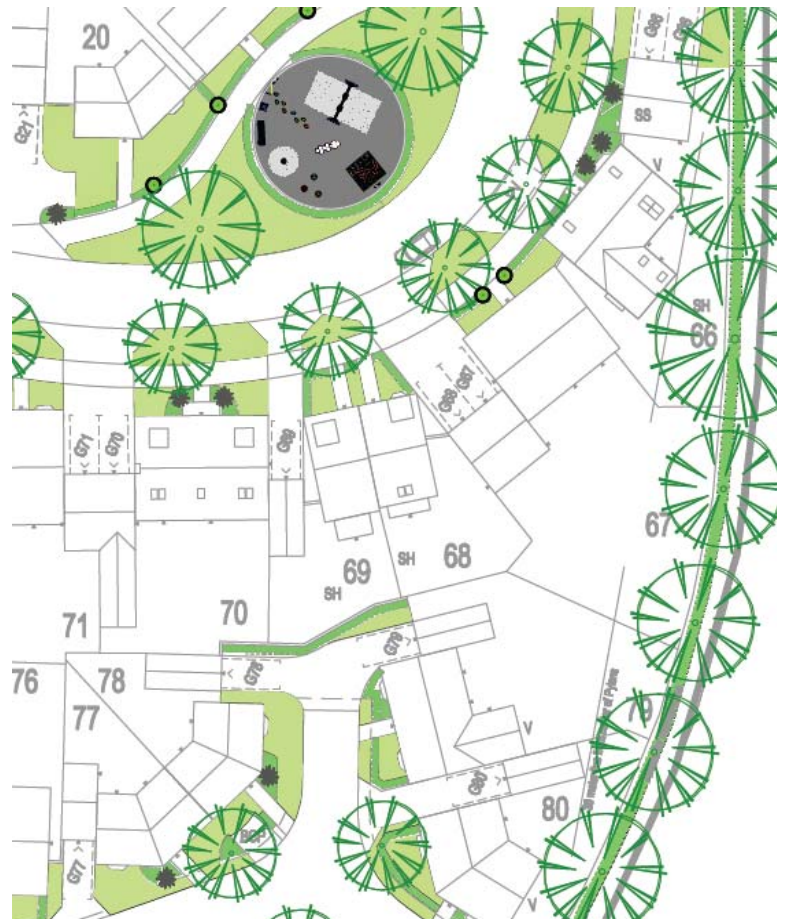


# Case Study

A more holistic and functional approach ensured the landscape fulfilled a series of essential roles in the environment by:

1. Providing a high quality sustainable landscape which optimises the use of the site
2. Providing an external environment which softens the requirement for permanent car parking to frontages
3. Providing a significant enhancement to the site's biodiversity
4. Facilitating controlled access by the wider community and providing a venue and exemplar to promote sustainable development
5. Minimising maintenance requirements and future resource input
6. Providing a highly aesthetical street scene both in the short and long term enhancing the surrounding environment
7. Responding to the scheme as a whole, working in unity with the proposed built form

The drawings submitted by Covey Design to DWH included 150 plots, 3 public open spaces, a LEAP and 2 LAP's. The scheme included an imposing avenue along the main spine road created with 20-25cm girth structural trees. Where possible this linear effect was emphasised with the use of 10L hedging, planting at a density to provide an instant hedge effect. With the use of trees being limited in some areas due to the size of most frontages, specimen topiary was introduced to ensure instant height and structure from implementation.



## About Covey Design:

Covey Design is part of **tcl**, which is one of the largest, most progressive landscape service companies in the UK. We consistently provide high quality landscape consultancy, design, construction and maintenance services to customers nationwide.

Over 25 years we have established a reputation for high quality and cost effective landscape solutions. We understand how important these values are to our customers, that's why we always specify premium grade materials and the use of best practice, ensuring all projects are completed to the highest possible standard.